



2016 World Rallycross Championship
2016 European Rallycross Championship

Rallycross of Portugal

Montalegre, 15-17 April 2016

EVENT SAFETY PLAN



1. GENERAL

The present safety plan concerns [the Portuguese round of the 2016 Rallycross World Championship](#) and/or European Championship scheduled for [15th to the 17th April 2016](#), at the ["Circuito de Montalegre" in Portugal](#).

The circuit of [Montalegre](#) is the holder of a grade 6R licence issued by the FIA on the [25th April 2014](#), and valid from [18th April 2014 to the 31st December 2017](#).

Moreover, the present safety plan undertakes to respect the provisions, recommendations and requirements specified in Article 3 of Appendix H (recommendations concerning the surveillance of the route and the intervention services). This notwithstanding, each organiser is permitted to add to this anything that might improve the safety of the spectators, competitors and drivers, as well as the safety of the officials.

2. OFFICIALS

In all matters pertaining to the above competition, the local officials (below) are the key people to contact in case of emergency and/or incident.

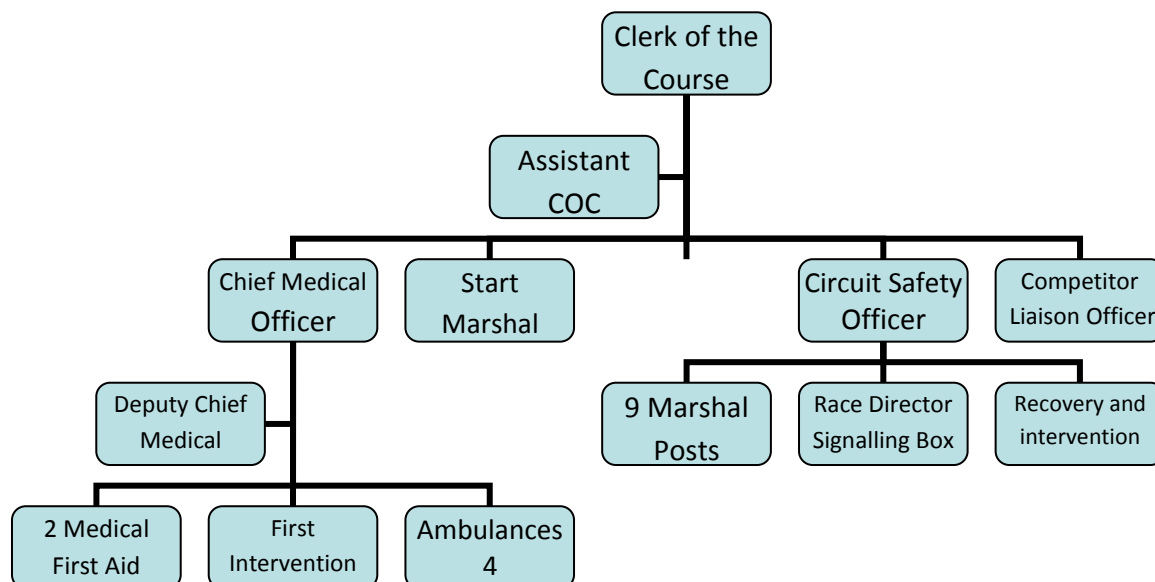
- Clerk of the Course:
Mr. Antonio Pureza – antoniomanuelpureza@gmail.com (+351) 968 027 964
- Deputy Clerk of the Course:
Mr. Eduardo Ferreira – edferreira69@hotmail.com (+351) 918 709 957
- Secretary of the Event:
Mrs. Silvia Serafim – silvia.serafim@gmail.com (+351) 910 899 959
- Safety Officer:
Mr. Eduardo Ferreira – edferreira69@hotmail.com (+351) 918 709 957
- Chief Medical Officer:
Dr. Rui Capucho – rui.capucho@gmail.com (+351) 962 723 293
- Deputy Chief Medical Officer:
Dr. Ana Esteves – anasofae@gmail.com (+351) 914 959 933
- Chief Scrutineer:
Mr. Armindo Carlos (+351) 963 736 918
- Paddock Officer:
Mr. Nuno Dias (+351) 968 426 834
- Pre-Grid Area Officer:
Mr. Fernando Vaz – fernandompvaz@gmail.com (+351) 913 500 430
- Starter:
Mr. Fernando Oliveira (+351) 966 323 618
- Chief of track maintenance reconstruction team:
Mr. Joao Ribeiro (+351) 962 733 044

NB: The officials responsible for the operational running of the event will be located in the race control building during the whole event.

3. COMMUNICATIONS / TELECOMS

The communications for the smooth running of the event will be done via a, portable radio, network under the control of the Clerk of the Course. He will centre all communications and dispatch the instructions throughout the frequency as needed.

The Radio frequency will have about 30 radios allocated as follows:



There will be a landline for emergency: +351 276 511 510

4. NATIONAL SAFETY SERVICES

POLICE:

Guarda Nacional Republicana (+351) 276 510 300

HOSPITAL(S):

Hospital de Chaves - (+351) 276 322 011

Hospital de Vila Real - (+351) 259 300 500

EMERGENCY MEDICAL SERVICES:

Centro de Saúde de Montalegre - (+351) 276 510 160

FIRE-FIGHTING SERVICES:

Bombeiros Voluntários de Montalegre (+351) 276 512 301

BREAKDOWN SERVICES:

Reboques Pires - (+351) 276 512 742

Reboques Auto-Trindade. - (+351) 276 512 833

RED CROSS (or equivalent):

Red Cross does not operate in the Montalegre area.

If an Ambulance is needed, the contact is the fire department:

Bombeiros Voluntários de Montalegre (+351) 276 512 301

5. SAFETY ARRANGEMENTS OF THE CIRCUIT

5.1. SAFETY OF THE SPECTATORS

A. Details of where the rescue services are stationed

A temporary hospital is set up just for the occasion

It will be located within the precinct behind the main grand stands.

This is done under the responsibility of the fire department.

It will have a doctor and nurses to attend any situation that may arise with any of the spectators

B. Instruction for intervention (in case of accidents, incidents and dangerous situations)

Spectators will be directed to the spectators temporary hospital facilities, for evaluation.

Then it is up to the attending doctor to report to the CMO, if the patient is treated on sight of evacuated

C. Evacuation routes

In case of evacuation, the ambulance will use the same exit route as the ambulances dedicated to the sporting side.

The nature and place of the circuit does not allow to have a route dedicated to evacuation, because there is only one double lane road to and from the circuit

To de Centro de Saúde de Montalegre

Leave Padornelos

0.6 km Continue straight on
1 km 00h01 Turn right : **EM509**
3.5 km 00h04 **Pass Bairro do Crasto**
4 km 00h05 Turn right : **EM509 / Rua Ferreira De Castro**
4 km 00h05 Turn right : **EM508 / Rua Padre Domingos Barroso**
4 km 00h05 At the roundabout, EM508, take the 2nd exit: **Rua da Fronteira**
4 km 00h05 Continue along: **EM508 / Rua Lama do Moinho**
Exit Bairro do Crasto
4.5 km 00h05 Continue along: **EM508 / Rua Lama do Moinho**
4.5 km 00h05 Arrival at Centro de Saúde de Montalegre

To the Hospital Distrital de Chaves

Leave Padornelos

0.6 km Continue straight on
1 km 00h01 Turn right : **EM509**
1.4 km 00h02 Turn left : **EM508 / Estrada Municipal**
2 km 00h03 At the roundabout, take the 2nd exit: **EM508 / Estrada Municipal**
3.5 km 00h06 Continue left : **EM508**
19 km 00h23 **CM1352** Continue along: **CM1352**
22 km 00h28 Turn right : **EM507**
34 km 00h47 Close to **Chaves**, Continue right : **EM507 / Rua da Paz**
34 km 00h48 **Pass Chaves**
34 km 00h48 At the roundabout, take the 3rd exit: **Rua da Fonte do Leite**
35 km 00h48 At the roundabout, take the 1st exit: **Rua da Fonte do Leite**
35 km 00h49 At the roundabout, take the 2nd exit: **Rua da Fonte do Leite**
36 km 00h50 At the roundabout, take the 1st exit: **Rua da Fonte do Leite**
36 km 00h50 **Arrive in Chaves**
36 km 00h52 Continue along: **Rua Viscondessa Rosário**
37 km 00h53 Continue along: **Rua do Cruzeiro**
37 km 00h54 Turn left : **Rua Alferes João Batista**
37 km 00h54 Turn right : **Rua Pessegueiro**
37 km 00h55 **Arrival at the Hospital**

Unidade Hospitalar de Vila Real (Hospital de Vila Real)

Leave Padornelos

0.6 km		Continue straight on
1 km	00h01	EM509 Turn right : EM509
4 km	00h04	At the roundabout, take the 2nd exit
4 km	00h05	EM509 Turn right : EM509 / Rua Ferreira De Castro
4 km	00h05	EM508 Turn right : EM508 / Rua Padre Domingos Barroso
4 km	00h05	At the roundabout, take the 2nd exit: Rua da Fronteira
4 km	00h05	EM508 Take EM508
5 km	00h06	At the roundabout, take the 2nd exit: Rua Bento da Cruz
5.5 km	00h07	Continue along: Avenida da Noruega
6 km	00h08	N308 At the roundabout, take the 2nd exit: N308
13 km	00h17	N103 Continue along: N103
39 km	00h47	E801 A24 IP3 Take E801 / A24 / IP3 towards: A24 VILA REAL
40 km	00h48	N103 - Couralha
48 km	00h53	N2 - Vidago
57 km	00h59	Pedras - Bragado
69 km	01h07	Vila Pouca de Aguiar
90 km	01h21	Take the exit towards: IP4 / PORTO / BRAGANÇA / VILA REAL NORTE/
91 km	01h21	Head towards: IP4 / PORTO / VILA REAL / CHAVES
91 km	01h22	E82 / IP4 / Continue along: E82 / IP4
96 km	01h26	Take the exit towards: 25A / LORDELO SUL / HOSPITAL / LORDELO
96 km	01h26	Arrival at the Hospital

- D. The hospital(s) which has (have) been contacted and which would be used in the event of an emergency

Centro de Saúde de Montalegre

Rua Lama do Moinho, n.º 400
5470-225 MONTALEGRE

Hospital Distrital de Chaves

Av. Dr. Francisco Sá Carneiro,
5400-249 Chaves

Unidade Hospitalar de Vila Real (Hospital de Vila Real)

Unidade Hospitalar de Vila Real
Avenida da Noruega
5000-508 Vila Real

(for better details please consult the FIA Medical Questionnaire)

5.2. SAFETY OF THE COMPETITORS/DRIVERS

- A. Details of where the rescue services are stationed

The rescue services will work in 2 locations:

The circuit medical Centre and the INEM temporary hospital.

The Medical Centre is on the ground floor from the race control building

The INEM Temporary Hospital is located adjacent to the TV compound in a restricted access area

If the accident involves any of the participants or drivers in the paddock area, a paddock crew will transport the patient to the Medical Centre, and the Doctor on Duty will decide if the patient is treated on sight or evacuated.

If it is with a driver on track see point 7.1 below

- B. Instruction for intervention (in case of accidents, incidents and dangerous situations)

In case of accident please contact the nearest medical crew or head to the Medical Centre

C. Evacuation routes

The evacuation routes from the circuit are the same for all medical services involved in the event.

D. The hospital(s) which has (have) been contacted and which would be used in the event of an emergency

The same as defined in point 4 above.

5.3. SAFETY OF THE OFFICIALS

A. Details of where the rescue services are stationed

The rescue services will work in 2 locations:

The circuit medical Centre and the INEM temporary hospital.

The Medical Centre is on the ground floor from the race control building

The INEM Temporary Hospital is in the restricted area adjacent to the TV Compound

B. Instruction for intervention (in case of accidents, incidents and dangerous situations)

All Officials are instructed to head to the nearest medical service, depending if they are on track, in race control, scrutineering area or paddock.

C. Evacuation routes

The evacuation routes from the circuit are the same for all medical services involved in the event.

D. The hospital(s) which has (have) been contacted and which would be used in the event of an emergency

Centro de Saúde de Montalegre

Hospital Distrital de Chaves

6. SAFETY AND RESCUE UNITS

6.1. EVENT MEDICAL PROVISIONS

Ambulances:

for the track - 4 Tipe A fully equiped on track

for the paddock - 3 normally equiped

Extrication vehicles:

2 extrications vehicles are available on track. 1 in the start area and 1 on the aprocah of T1. Both have hand held radios to liaise with Race Control.

Also available are to Extraction teams, to intervene in case of extrication.

Medical intervention vehicle:

2 medical cars are available on track. Directly under the orders of the COC and CMO they will interveene when requested, they are in permanent radio contact with Race Control and the COC

Medical Centre:

The circuit has 2 medical facilities.

The medical centre and the INEM Hospital.

The medical centre was built at the time according to the European Off-road Championships standards, so it is not fully compliant with Appendix H because of this the organizers decided to bring in the INEM hospital, that is prepared for major civilian catastrophes'.

(for more details please see the FIA Medical Questionnaire)

Fire tender:

- 1 fire tank that attends for the paddock and will water the track.
- 1 Fire car just for the fuel truck area

Fire points/extinguishers:

Each Marshal post on track is equipped with 2 6Kg Fire extinguishers.
The rescue vehicles are equipped with fire extinguishers.
There are fire extinguisher points in the competitors area in the paddock.
A fire truck is permanently near the fuel truck.
A 5000 litres tank is available and will be used to water the track.

Tow trucks:

3 flat beds are placed around the track and in permanent radio contact with Race Control.
3 Rescue cars, with towing ropes, fire extinguishers and other intervention equipment are placed around the track.

Other/Comments:

In order to allow severely damaged cars to be loaded on the flat beds a Mobile Truck/Crane is available in case of need.

All with radios to liaise with race control

In addition, is/are there :

- Doctors or paramedics on foot ? **Yes**
(More details can be found in the FIA Medical Questionnaire)
- **Helicopter ?** **Yes**
 - If yes, is it a medically-equipped helicopter ? **Yes**
The helicopter is a civilian helicopter and will be equipped on arrival at the circuit.
(More details can be found in the FIA Medical Questionnaire)

6.2. CIRCUIT SAFETY PROVISIONS

Startline:

The start line has 2 marshals in permanent radio contact with Race Control.
They have the full set of flags for the use of the COC as well as all boards that go with them.
The start lights are controlled by the start line

Paddock:

The paddock area will have officials from the organization ready to help any of the Participants with any of their needs or if they need any kind of advice.
At perfectly visible positions the teams will find fire extinguishers.
An ambulance will be made available if someone needs urgent transportation for medical reasons.

Scrutineering area:

Within a controlled area, public will not access the Scrutineering area, here one can find the scrutineering team that will have all the necessary equipment to submit the entered cars to the initial scrutineering, this will include all the safety checks, weight control and others that may be decided by the FIA TEC Delegate or the Chief Scrutineer.
A electronic scale will be in place to allow the cars to be weighted at any time during the event.
All Scrutineers are under the responsibility of the Chief Scrutineer.

Refuelling Zone:

In the refuelling zone there is a dedicated fire truck, as well as fire man that are only for that area.
It's on one extreme of the paddock area near the circuit premises main entrance.
This area is also connected to Race Control by radio

Marshall Posts:

All marshal posts are under the responsibility of a Chief Track Marshal.
Each Marshal post will have at least 2 marshals (majority will have 3 or more).
They will be equipped with all flags as per the requirements of Appendix H, they will have at least 6 extinguishers of 6Kg, they will have brooms, oil absorbent and gloves.
All Marshal Postes are in permanent radio contact with Race Control / COC

Reconstruction, anti-dust treatment and watering procedures, including control of track safety equipment (like track edge markers replacing, tyre barriers reconstruction procedures etc...):

The track is well maintained by the local authorities that normally have on the spot heavy machinery to repair and consolidate the surface when required to do so by the COC. A permanent watering system is in place to reduce the time needed to wet the track. At the same time a 5.000 litre Water Truck is on sight to intervene if needed.

Beside the track surface maintenance the Municipality also send teams of personnel for multi task repairs, a fence a guard rail a bolard or any other part of the infra structure that may need repairs will be immediately taken care of.

Other comments: All these areas are in contact by radio means.

6.3. HELIPAD

Location + GPS coordinates: The location is adjacent to the track and the GPS coordinates according Google Maps are:

Latitude: 41.84732445

Longitude: -7.75924712

7. INCIDENT PROCEDURES

7.1. ON TRACK

→ Minor incident

In case of accident on track, that is reported as having physical injuries session heat or race will be stopped and Doctor will be dispatched to the scene.

Degree of injuries will be accessed and if needed ambulance can be dispatched to the spot, otherwise the medical car will bring the injured to the medical centre.

In all cases evaluation of the injured will be done and reported to the CMO.

→ Serious accident

In case of severe accident on track, session heat or race will be stopped and Doctor will be dispatched to the scene.

Evaluation of the patient will be done and 3 options are available for decision to be taken by the CMO.

During the process of stabilisation the CMO based on feed back from the doctor on the spot, or personal evaluation will decide if the patient is to be transported to the:

- Medical centre / Circuit hospital facilities, light or minor injuries.
- Centro de Saúde de Montalegre in case of severe injuries.
- Hospitals, Distrital de Chaves or Vila Real for very severe or life threatening injuries.

7.2. OFF TRACK

→ Minor incident

In case of an injured in the paddock the Ambulance will be dispatched to the spot.
Once the situation is evaluated and communicated to the CMO the patient may will be treated on spot.

Involving spectators:

In case of an injured in the public areas the Ambulance will be dispatched to the spot.
Once the situation is evaluated and communicated to the CMO the patient may will be treated on spot.

→ **Serious accident**

In the paddock:

In case of severe accident in the paddock, an ambulance will be dispatched to the scene and Doctor will follow.

Evaluation of the patient will be done and 3 options are available for decision to be taken by the CMO.

During the process of stabilisation the CMO, based on feed back from the doctor on the spot, or personal evaluation will decide if the patient is to be transported to the:

- Medical centre / Circuit hospital facilities, light or minor injuries.
- Centro de Saúde de Montalegre in case of severe injuries.
- Hospitals, Distrital de Chaves or Vila Real for very severe or life threatening injuries.

Involving spectators:

In case of severe accident in the Spectator area, an ambulance will be dispatched to the scene and Doctor will follow.

Evaluation of the patient will be done and 3 options are available for decision to be taken by the CMO.

During the process of stabilisation the CMO, based on feed back from the doctor on the spot, or personal evaluation will decide if the patient is to be transported to the:

- Medical centre / Circuit hospital facilities, light or minor injuries.
- Centro de Saúde de Montalegre in case of severe injuries.
- Hospitals, Distrital de Chaves or Vila Real for very severe or life threatening injuries.

7.3. MAJOR DISASTER PLAN

e.g. Major explosion

In case of major disaster in any area, the most means of rescue will be dispatched to the scene and Doctor as well safety officer will follow.

Evaluation of the situation will be done and 2 options are available for decision to be taken by the CMO.

Based on evaluation from the doctor and safety officer on the spot, will be decided that the injuries will be transported by helicopter or ambulances to the:

- Hospitals, Distrital de Chaves or Vila Real.
- Hospital S. João Porto (Unit for burnt patients)

8. MAP(S)

EQUIPMENT

The following must appear on the map(s):

- ✓ Ambulances
- ✓ Extraction vehicles
- ✓ Medical intervention vehicles
- ✓ Fire tender
- ✓ Fire points/extinguishers
- ✓ Tow trucks
- ✓ Track-spraying vehicles
- ✓ Positions of the reconstruction teams
- ✓ Helicopter/helipad
- ✓ Doctors or paramedics on foot

POSTS / AREAS

The following posts must appear on the map(s):

- ✓ Medical centre dedicated to the race
- ✓ Medical centre dedicated to the public
- ✓ Fire station
- ✓ Marshall posts
- ✓ Location of the officials (Race Director, Stewards' meeting room, FIA Observer, Clerk of the Course, Chief Timekeeper, Chief Medical Officer, Event secretariat, Secretary of the meeting, Safety Officer, Chief Scrutineer, Drivers' Liaison Officer)

The following zones must be clearly identified on the map(s):

- ✓ Prohibited/authorised areas to the public
- ✓ Spectator area
- ✓ Scrutineering area
- ✓ Refuelling zone
- ✓ Paddock
- ✓ Parc fermé
- ✓ Public parking

OTHERS

The following must also appear on the map(s):

- ✓ Route and timing to the closest hospital
- ✓ Circuit entrance/exit
- ✓ Emergency exit(s) and evacuation routes



2016 World Rallycross Championship
2016 European Rallycross Championship

Rallycross of Portugal

Montalegre, 15-17 April 2016

PADDOCK SAFETY PLAN

1. SAFETY ARRANGEMENTS OF THE Paddock

- A. Details of where the rescue services are stationed
Apart from the ambulance that will permanently stationed in the paddock, there are several paramedics on foot without defined positioning.
- B. Instruction for intervention (in case of accidents, incidents and dangerous situations)
See detailed description of hospital access at the end of this document.
- C. Evacuation routes
(See detailed description of hospital access at the end of this document)

2. SAFETY AND RESCUE UNITS

6.1. EVENT MEDICAL PROVISIONS

(ALL RELEVANT INFORMATIONS ARE CONTAINED IN THE FIA MEDICAL QUESTIONNAIRE)

Ambulances:

2 Ambulances for the Paddock and Public Areas

Medical intervention vehicle:

No medical intervention vehicle (only ambulance)

Fire tender:

1 fire truck dedicated to the paddock

Fire points/extinguishers: S

Several extinguisher points along the paddock areas.

Tow trucks:

No dedicated tow truck for the paddock

In addition, is there :

- Doctors or paramedics on foot ? **Yes**

One doctor, two nurses fully equipped.

3. INCIDENT PROCEDURES

Minor incident

In case of an injured in the paddock the Ambulance will be dispatched to the spot.

Once the situation is evaluated and communicated to the CMO the patient may will be treated on spot.

Serious accident

In case of severe accident in the paddock, an ambulance will be dispatched to the scene and Doctor will follow.

Evaluation of the patient will be done and 3 options are available for decision to be taken by the CMO.

During the process of stabilisation the CMO, based on feed back from the doctor on the spot, or personal evaluation will decide if the patient is to be transported to the:

- Medical centre / Circuit hospital facilities, light or minor injuries.
- Centro de Saúde de Montalegre in case of severe injuries.
- Hospitals, Distrital de Chaves or Vila Real for very severe or life threatening injuries.

4. MAP(S)

EQUIPMENT

The following must appear on the map(s):

- ✓ Ambulances
- ✓ Medical intervention vehicles (Recovery vehicles?)
- ✓ Fire tender
- ✓ Fire points/extinguishers
- ✓ Tow trucks
- ✓ Doctors or paramedics on foot

POSTS / AREAS

The following zones must be clearly identified on the map(s):

- ✓ Prohibited/authorised areas to the public
- ✓ Car wash area

OTHERS

The following must also appear on the map(s):

- ✓ Direction of traffic flow
- ✓ Paddock entrance/exit
- ✓ Emergency exit(s)



2016 World Rallycross Championship
2016 European Rallycross Championship

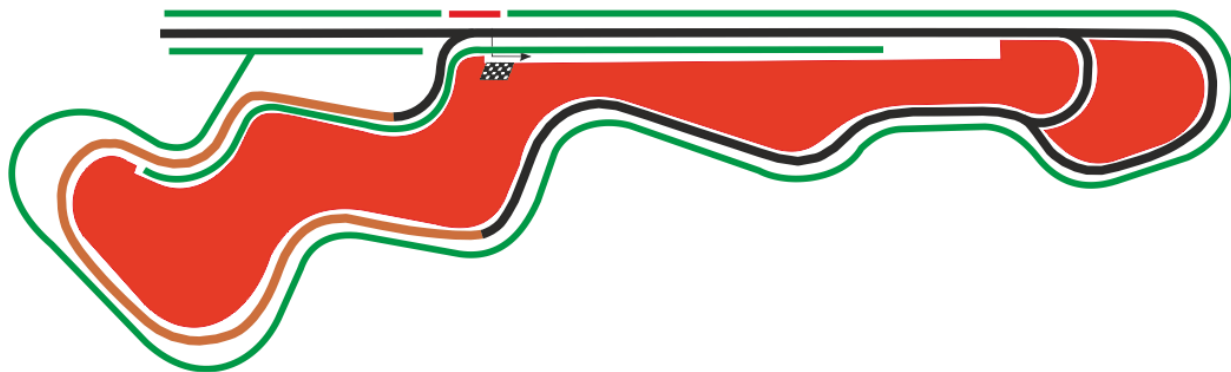
Rallycross of Portugal

Montalegre, 15-17 April 2016

MEDIA SAFETY PLAN

RED ZONES

Crossing the track:
Only between sessions or heats and
after express authorization from a marshal

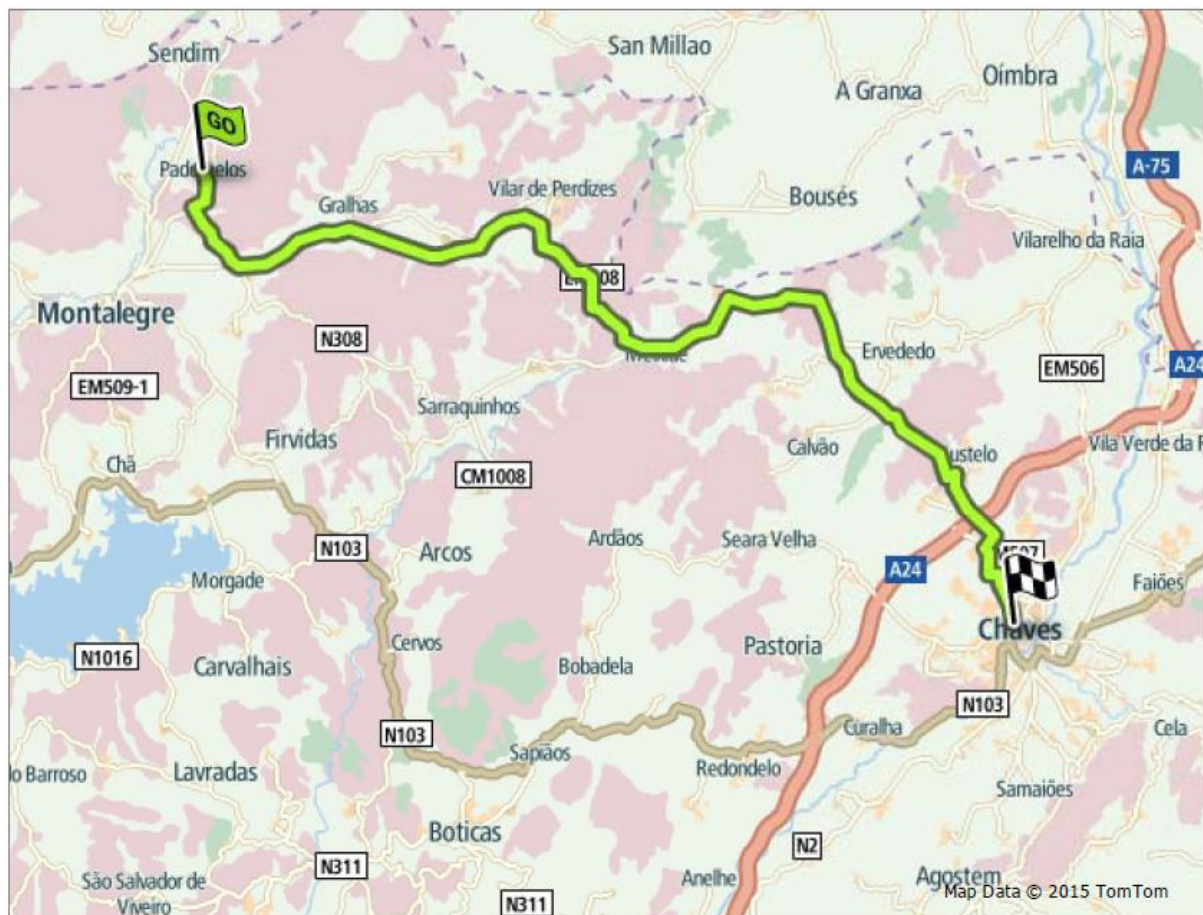


To the Hospital Distrital de Chaves

Av. Dr. Francisco Sá Carneiro,
5400-249 Chaves

Leave Padornelos

- 0.6 km** Continue straight on
- 1 km** 00h01 Turn right : **EM509**
- 1.4 km** 00h02 Turn left : **EM508 / Estrada Municipal**
- 2 km** 00h03 At the roundabout, take the 2nd exit: **EM508 / Estrada Municipal**
- 3.5 km** 00h06 Continue left : **EM508**
- 19 km** 00h23 **CM1352** Continue along: **CM1352**
- 22 km** 00h28 Turn right : **EM507**
- 34 km** 00h47 Close to **Chaves**, Continue right : **EM507 / Rua da Paz**
- 34 km** 00h48 **Pass Chaves**
- 34 km** 00h48 At the roundabout, take the 3rd exit: **Rua da Fonte do Leite**
- 35 km** 00h48 At the roundabout, take the 1st exit: **Rua da Fonte do Leite**
- 35 km** 00h49 At the roundabout, take the 2nd exit: **Rua da Fonte do Leite**
- 36 km** 00h50 At the roundabout, take the 1st exit: **Rua da Fonte do Leite**
- 36 km** 00h50 **Arrive in Chaves**
- 36 km** 00h52 Continue along: **Rua Viscondessa Rosário**
- 37 km** 00h53 Continue along: **Rua do Cruzeiro**
- 37 km** 00h54 Turn left : **Rua Alferes João Batista**
- 37 km** 00h54 Turn right : **Rua Pessegueiro**
- 37 km** 00h55 **Arrival at the Hospital**



To the Unidade Hospitalar de Vila Real (Hospital de Vila Real)

Unidade Hospitalar de Vila Real

Avenida da Noruega

5000-508 Vila Real

Leave Padornelos

- 0.6 km** Continue straight on
- 1 km 00h01** EM509 Turn right : **EM509**
- 4 km 00h04** At the roundabout, take the 2nd exit
- 4 km 00h05** EM509 Turn right : **EM509 / Rua Ferreira De Castro**
- 4 km 00h05** EM508 Turn right : **EM508 / Rua Padre Domingos Barroso**
- 4 km 00h05** At the roundabout, take the 2nd exit: **Rua da Fronteira**
- 4 km 00h05** EM508 Take **EM508**
- 5 km 00h06** At the roundabout, take the 2nd exit: **Rua Bento da Cruz**
- 5.5 km 00h07** Continue along: **Avenida da Noruega**
- 6 km 00h08** **N308** At the roundabout, take the 2nd exit: **N308**
- 13 km 00h17** **N103** Continue along: **N103**
- 39 km 00h47** **E801 A24 IP3**
Take **E801 / A24 / IP3** towards: **A24 VILA REAL**
- 40 km 00h48** N103 - Couralha
- 48 km 00h53** N2 - Vidago
- 57 km 00h59** Pedras - Bragado
- 69 km 01h07** Vila Pouca de Aguiar
- 90 km 01h21** Take the exit towards: **IP4 / PORTO / BRAGANÇA / VILA REAL NORTE/**
- 91 km 01h21** Head towards: **IP4 / PORTO / VILA REAL / CHAVES**
- 91 km 01h22** **E82 / IP4** / Continue along: **E82 / IP4**
- 96 km 01h26** Take the exit towards: **25A / LORDELO SUL / HOSPITAL / LORDELO**
- 96 km 01h26** **Arrival at the Hospital**

